

.....: The Bridge to All Markets

CONTEX Summit®

compunetix

CONTEX Summit®



Meetings and conferences are about communicating. They're about delivering a clear message and driving a group toward consensus. They're about informing, explaining, deciding, and presenting ideas to many people at the same time.

Effective communication increases productivity by enhancing business activities and driving down costs.

Communication has many forms. It can be planned, fixed – scheduled. Or, it can be spontaneous, ad-hoc – on demand.

Communication evolves and grows, moving from one location to another, one medium to another, from one network to another, from one time zone to another.

Collaborative Communication. Many forms. Many opportunities. Many markets.

CONTEX Summit — one conferencing bridge — a collaboration platform for communication without limits.

Now there is one bridge that spans all conferencing markets. No matter what your collaboration needs, the **CONTEX Summit** is the *only* platform you will need. It combines an almost unlimited capacity with carrier-class reliability, rich features, and a small footprint. The Summit allows participants to “meet” at anytime, from anywhere in the world over the telephone or Internet, with or without reservations.

CONTEX Summit — the industry's first **Concentrated Media Processor (CMP)** — is a new class of conferencing hardware. This new platform combines the quality and reliability of traditional conference hardware with the scalability and flexibility of a media server to bridge the transition from circuit-switched to packet-based telecom networks.

The **CONTEX Summit** gives you:

High Capacity: You get nearly 2,000 ports per shelf through this system's high-density connectivity. The network interface modules provide the capacity and network flexibility to support large attended and on-demand services for both PSTN and IP clients.

Expandability: With its expandable architecture, add ports as the demand for your service increases. And you have almost unlimited capacity with up to five shelves providing up to 9,600 ports in one bridge.



Elevate your Conferencing. Meet on the Summit.

Reliability: The carrier-class CONTEX® family of conferencing platforms is the most reliable in the industry. In fact, nearly every installed CONTEX bridge is still in use today.

The CONTEX Summit offers optional triple redundant control, continuous system check and diagnostics, no single point of failure, conference redundancy, hot-swap modules, a highly reliable operating system, power supply and feed redundancy, and fan monitoring.

Rich Features: The Summit is feature rich and offers the most comprehensive set of audioconferencing collaboration tools available.

Supporting the renown CONTEX attended and on-demand conferencing features, the Summit continues to support all call types, endpoints, and markets.

The Summit is fully Internet enabled with support for Web control, voice over IP, streaming, and dataconferencing.

All Compunetix systems feature open-system APIs that allow customers and third-party developers to design and fully integrate extended applications for faster service creation. The CONTEX Summit's open development environment makes it the center

of our clients' collaborative audio services.

Small footprint: The CONTEX Summit platform's small physical footprint and modular design provides unsurpassed density, high reliability, and rack-mountable convenience.

Flexibility: With the CONTEX Summit you can communicate using PSTN, VoIP, or the Web and conduct either attended or unattended conferencing.

Quality conferencing: In addition to continuing the CONTEX tradition of conference call clarity, the Summit is the only bridge on the market that offers high-fidelity audio compatibility.

Compatibility: The Summit is completely backward compatible with all current CONTEX interfaces and APIs.

Investment Protection: As with all Compunetix products, the CONTEX Summit is competitively priced and represents an unprecedented value.

If you want a high-capacity, expandable, reliable, and feature-rich audioconferencing platform, the CONTEX Summit is the bridge for you!

OPERATIONAL FEATURES:

Capacity	T1: 192 – 1920 ports per shelf (increments of 192 ports) E1: 240 – 1920 ports per shelf (increments of 240 ports) Expandable to five shelves (9600 ports)
Conference Types	Attended: Dial-In, Dial-Out, Simultaneous Group Dial, Event, Auto-Event™ Unattended: Passcode Meet-Me, Passcode Progressive (Chairperson Dial-Out), Passcode Preset, Passcode Preset with Precedence, Passcode plus PIN Verification, DNIS Meet-Me, DNIS Progressive (Chairperson Dial-Out), DNIS Preset, Auto-Event
Number of Conferences	Unlimited (N/2) (where N equals the number of configured ports).
Parties per Conference	Unlimited up to N (where N equals the number of configured ports).
Number of Talkers	Full duplex and variable from all talkers to one talker.
Noise Filtering	DSPs eliminate line or background noise from the conference, 18dBmCO or less.
Voice Quality	Built-in Echo Cancellation, Tone Block, High-Fidelity/Wideband Audio Background Noise Elimination
Operator Consoles (local or remote)	Up to 40
Operator Interface	PC utilizing Microsoft Windows®-based operator administration software, connected via TCP/IP.
Line Interface	E1/T1 (D3/D4 or ESF framing) ISDN PRI B8ZS or AMI Fully Compatible with ANSI and ITU Standards Master or Slave Clocking Fast Ethernet (VoIP)
Signaling Options	Loop Start, Ground Start, E&M, Wink Start, FXS, PLAR, FXO, ISDN [(Lucent 4ESS/5ESS, Nortel DMS, NI-2, Net5, (EuroISDN) PH (Australian ISDN)], NFAS (optional), SIP/H.323
Digital Enunciator (redundant)	Play to and record from up to 1,000 ports.
DTMF Generation/Recognition	Provided for Each Channel, (Port) per BellCore, TR-TSY-000181
Echo Control	Suppression — Standard; Internal Cancellation — Optional
Input/Output Gain Control	+/- 10 dB manual operator controlled in 1 dB increments per port, adaptive automatic gain control per port.
Self Test and Diagnostics	Continuous at both the lowest replaceable unit (LRU) level and system level.
Remote Management	Alarms, Diagnostics, System Configuration, Software Changes, Reporting, Operational Control, Scheduling
Support for all Conferencing Modes - Simultaneous	On-Demand, Scheduled, Event, Web Initiated, Full ANI and DNIS Support
Variable Bandwidth	Supports 3.1 kHz and 7kHz (high-fidelity) audio.
System Reliability	Mil-Std-55110 and Mil-Std-454

Optional System Redundancy	Triple Redundant Controller Redundant Voice Summation Dual Redundant Power Supplies Redundant Audio Enunciators Triple Communication to All Circuit Modules
-----------------------------------	---

OPERATIONAL CHARACTERISTICS:*

	DC Power	AC Power (optional)
Input Voltage	-42 to -56 VDC	88 to 264 VAC
Peak Current	21.4 amps @ -42 VDC 18.8 amps @ -48 VDC 17.3 amps @ -52 VDC 16.1 amps @ -56 VDC	11.6 amps @ 95 VAC 9.6 amps @ 115 VAC 4.8 amps @ 230 VAC
Nominal Power	900 Watts	1084 Watts
Thermal Output	3,071 BTU/H	3,698 BTU/H
Environment Sensors	Alarm generation for fan failure, over-temperature conditions, and input power anomalies.	

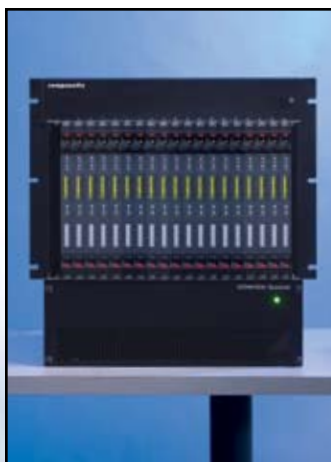
* Power requirements and thermal outputs are the maximum estimated for a fully populated system.

PHYSICAL CHARACTERISTICS:

Size	Single Shelf Width 19 inches (482.6 mm) Height 19.25 inches (488.95 mm) Depth 24 inches (609.6 mm)
Weight	Single Shelf Fully populated: 90 lbs. (34 kg)

OPERATING ENVIRONMENT:

Temperature	-10° C to 40° C 14° F to 104° F
Relative Humidity	5% to 90% (non-condensing)



CONTEX systems feature continuous real-time diagnostics, hot-swappable and self-healing system designs, and are built to military standards with patented technology. CONTEX bridges are built by Compunetix from the ground up, guaranteeing the quality of each bridge. All systems are backed by the company's stability, reputation, and 35-plus years of design and manufacturing experience. Compunetix offers the CONTEX 240, CONTEX 480, CONTEX On-Demand, and CONTEX Summit conferencing bridges. These robust, carrier-class bridges have assisted our customers by fueling the explosive growth in the audioconferencing market over the last decade.